

Specifications of C98 Workboat

GENERAL:

The C98 work boat is especially designed for assisting small cutter suction dredgers. The boat can be used for maintenance support, crew transport, re-fuelling, repositioning of the dredge etc. By means of the hydraulic crane of this work boat the anchors of the dredge can be moved and repositioned. The crane can also be used for lifting the floating line. etc. Further more the work boat is executed with extra fuel tanks to supply the dredger with the required fuel.

The C98 consists of an all welded rectangular shaped hull with transverse and longitudinal girders providing adequate strength. The hull is made of reinforced steel; ST 37-3, 5 mm thickness. The boat is very manoeuvrable by means of a direct driven propeller.



C98 at work

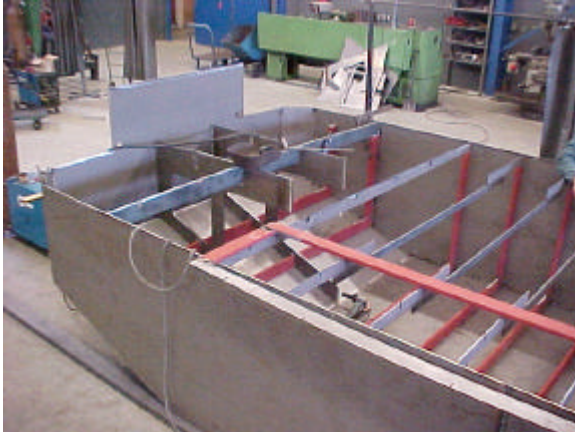
MAIN CHARACTERISTICS OF THE C98

OVERALL DIMENSIONS:

Total length	: 7.17 m
Total width	: 2.76 m
Total height	: 3.48 m (incl. cabin)
Travelling speed	: 0-12 km/h
Draught approx.	: 0.76 m
Displacement	: 6500 kg

HULL:

Length	: 6.90 m
Width	: 2.71 m
Height	: 1.00 m
Material	: St 37-3, 5 mm thickness
Deck	: completely closed deck with engine room access and one manhole



C98 hull under construction



Caterpillar 3054 engine

ENGINE:

- Diesel engine : 4 cylinder diesel engine, Caterpillar 3054 DINA, 56 kW at 2400 r.p.m. water cooled by integrated keel cooler
- Diesel tank : capacity 130 Ltr
- Electrical system : 12 Volt

CRANE

- Max. reach : 3.40 m from centre
- Capacity : 2,6 tm
- Slew : 330⁰
- Boom : extensible in two parts

FUEL TRANSFER:

The C98 is provided with an extra fuel capacity of 3000 ltr consisting of 4 inter connected fuel tanks each with a content of 750 ltr. This fuel can be transferred by an electrical fuel transfer pump with a capacity of 100 Ltr/min.

HYDRAULIC SYSTEM:

- Oil tank : capacity 50 ltr
- Oil pumps : gear wheel pump for all hydraulic functions
- Operation : all hydraulic components are independently, proportional adjustable in speed.
- Max. pressure : 200 bar

STEEL OUTFIT

A watertight access hatch made of steel (gas spring-supported) of adequate size of LxW; 1.61x1.34 m shall be provided on top of engine room. Through this hatch the engine can be serviced. Engine room is provided with 12V lights. The hatch is integrated in the deck and can be used as storage area with the rest of the deck. Engine room is provided with adequate size of air inlet and outlets brought to cabin roof level. For repair or maintenance purposes a second hatch is made in the deck in the cabin area providing access for one man. The deck is bulged for drainage of water and constructed of chequered plate.

The front of the boat is constructed with a watertight chamber to prevent the boat from sinking in case of frontal damage. The outer rear sides are also closed watertight.

Four hoisting eyes are provided on the four sides of the hull to facilitate lifting of the whole pontoon by crane.

PROPULSION:

Single 3 bladed mangan-bronze propeller type Faster K3.55, Ø22"x16"



Propeller type Faster K3.55



Propeller and cathodic protection

WHEELHOUSE:

The boat is executed with a steel wheelhouse, with all-round vision and windscreen wipers, to protect the operator from wind and sun. The front window is an opening type for air circulation purposes. The wheelhouse also provides room for a second person. All control functions are within comfortable reach of the driver. The crane is controlled from the deck of the boat.

Width : 1.20 m
 Length : 1.50 m
 Height : 2.00 m

DECK PROVISIONS:

- 8 bollards, 2 on each corner, to fix the vessel to a mooring point;
- 2 push bows with rubber fender;
- 4 units of working lights;
- Navigation lights;
- Air horn;
- Rubber tire fendering both sides;
- Heavy duty steel fendering all round;
- Life buoy;
- Fire extinguisher;

OTHER PROVISIONS:

- Cathodic protection;
- Maintenance free, water-greased propeller shaft with mechanical seal;
- Hydraulic steering gear;
- Rudder position gauges in wheelhouse;
- Remote controlled engine and forward/reverse gearbox;
- Hand operated mechanical bilge pump;

